



RFOptic Newsletter - June 2018

Welcome to our third newsletter of the year. As announced in our previous newsletter, we have launched our SNMP/HTML remote management for RFoF unidirectional and bidirectional applications.

Our ODL solutions keep gaining momentum, with system integrators in the US and East Asia placing orders. Apart from ODL, there is also an increased demand for our OEM and end-to-end solutions as you can read below.

Last but not least, we would like to remind you that we have updated our terms & conditions, privacy policy and cookies policy.

Enjoy your read, your RFOptic team.

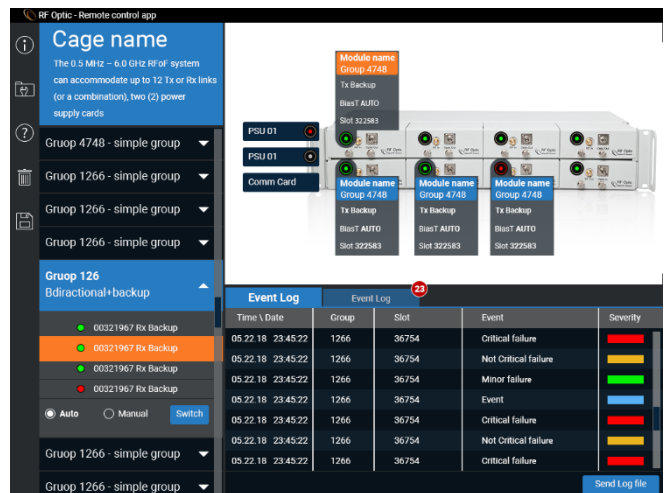
New! RFOptic has launched its SNMP/HTML interface

RFOptic has launched its SNMP/HTML interface to monitor, manage and control its products up to 6 GHz remotely. Any group of modules and any type of enclosure, such as 1U, 2U, outdoor and even bidirectional, can be managed and controlled remotely.

This new ability is especially suitable for applications such as [broadcast](#), [GPS](#), [remote antenna](#), [satcom](#), or any application where a group of modules is installed.

Furthermore, hot swap power supply (for increasing the MTBF and the MTTR of the system) is ready for ordering. Just contact Oz at sales@rfoptic.com.

For more information, click [here](#)



RFOptic's ODL Solutions Gain Momentum in the US and the East Asia



For the last few years, RFOptic has built a reputation as the go-to company for Optical Delay Lines (ODL) solutions. Recently, RFOptic has provided Optical Delay Lines to well-known system integrators in the US and East Asia.

Reasons why customers choose [RFOptic's ODL solutions](#):

- Suitable for any transceiver between a few MHz to 40 GHz
- Supports any type of delay line
- Supports any type of configuration, e.g., fixed delay line, variable delay line, etc.
- Option to extend the ODL at later stage
- Can be controlled via RS-232 or LAN

To read more, click [here](#)

Our OEM and end-to-end solutions are in high demand



We are receiving more and more requests for [OEM](#) and end-to-end solutions. The main drivers are the excellent cost performance of our solutions, their flexibility thanks to our [software](#), the short delivery times and our outstanding support.

With our products in high volume projects, customers can leverage their own product solutions and increase their effectiveness. Our technical team is always ready to listen and offer creative solutions and suitable roadmaps to potential partners.

Our end-to-end solutions are especially suited for leading companies and system integrators in the US market. Those projects include any type of [RFoF](#) from 2.5GHz up to 20GHz, [CWDM](#) and other customized configurations. In general, customers can control the modules with RFOptic's software as well as remotely. Even when projects or solutions are complicated, RFOptic continues to offer short delivery time and technical support all along the way until the customer is fully satisfied.

We have updated our policies for compliance

Recently, we have made updates to our [Terms and Conditions](#) (T&C), [Privacy Policy](#) and [Cookies Policy](#) to increase transparency and comply with the European Union's General Data Protection Regulation (GDPR). We encourage everyone concerned to read RFOptic's policies in full.



The updates went into effect on May 25, 2018, at which point anyone using our website or materials is considered to have accepted our updated policies.

For an overview of RFOptic's policies, visit our [privacy center](#).

Facebook



Our Website



LinkedIn

